



# MONTHLY MEMBERSHIP PROGRESS REPORT

District 13 F

Results as of: 6/30/2015

GMT: JERRY SMITH

LOCATION OHIO

GMT CA 1

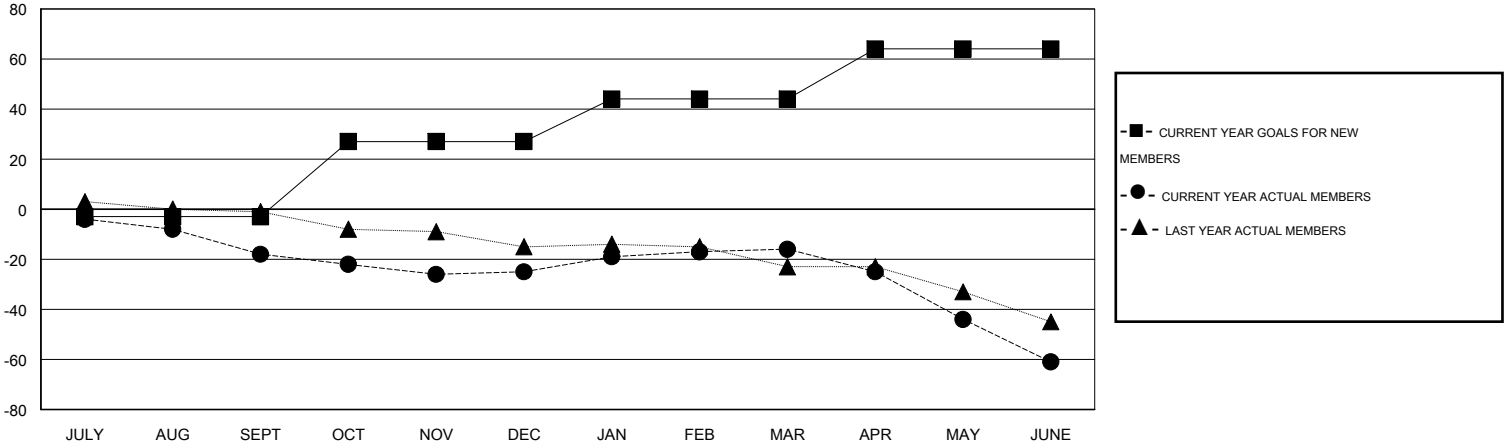
| Clubs                 |               |           |               |               |
|-----------------------|---------------|-----------|---------------|---------------|
| RESULTS FOR 2014-2015 |               |           |               |               |
| QUARTER               | NEW CLUB GOAL | NEW CLUBS | DROPPED CLUBS | NET GAIN/LOSS |
| JULY/AUG/SEPT         | 0             | 0         | 0             | 0             |
| OCT/NOV/DEC           | 1             | 0         | 0             | 0             |
| JAN/FEB/MAR           | 0             | 0         | 0             | 0             |
| APR/MAY/JUNE          | 1             | 0         | 1             | -1            |

| Members               |                 |                               |                 |               |
|-----------------------|-----------------|-------------------------------|-----------------|---------------|
| RESULTS FOR 2014-2015 |                 |                               |                 |               |
| QUARTER               | NEW MEMBER GOAL | CHARTER AND NEW MEMBERS ADDED | DROPPED MEMBERS | NET GAIN/LOSS |
| JULY/AUG/SEPT         | -3              | 16                            | 34              | -18           |
| OCT/NOV/DEC           | 30              | 35                            | 42              | -7            |
| JAN/FEB/MAR           | 17              | 31                            | 22              | 9             |
| APR/MAY/JUNE          | 20              | 19                            | 64              | -45           |

GOALS AND ACTUAL NEW CLUBS CUMULATIVE



GOALS AND ACTUAL MEMBERS CUMULATIVE



|                  |
|------------------|
| DROPPED CLUBS: 1 |
|------------------|

24 CLUBS OF 36 ADDED 1 OR MORE NEW MEMBERS

| GENDER DISTRIBUTION |              |
|---------------------|--------------|
| MALE                | 790 (73.56%) |
| FEMALE              | 284 (26.44%) |

| DROPPED MEMBERS |            |
|-----------------|------------|
| DECEASED        | 25         |
| CLUB CANCELLED  | 13         |
| OTHER           | 124        |
| <b>TOTAL</b>    | <b>162</b> |

[CLICK HERE FOR HEALTH ASSESSMENT DATA](#)

|                       |     |
|-----------------------|-----|
| FAMILY UNIT MEMBERS   | 124 |
| HEAD OF HOUSEHOLD     | 62  |
| NON-HEAD OF HOUSEHOLD | 62  |